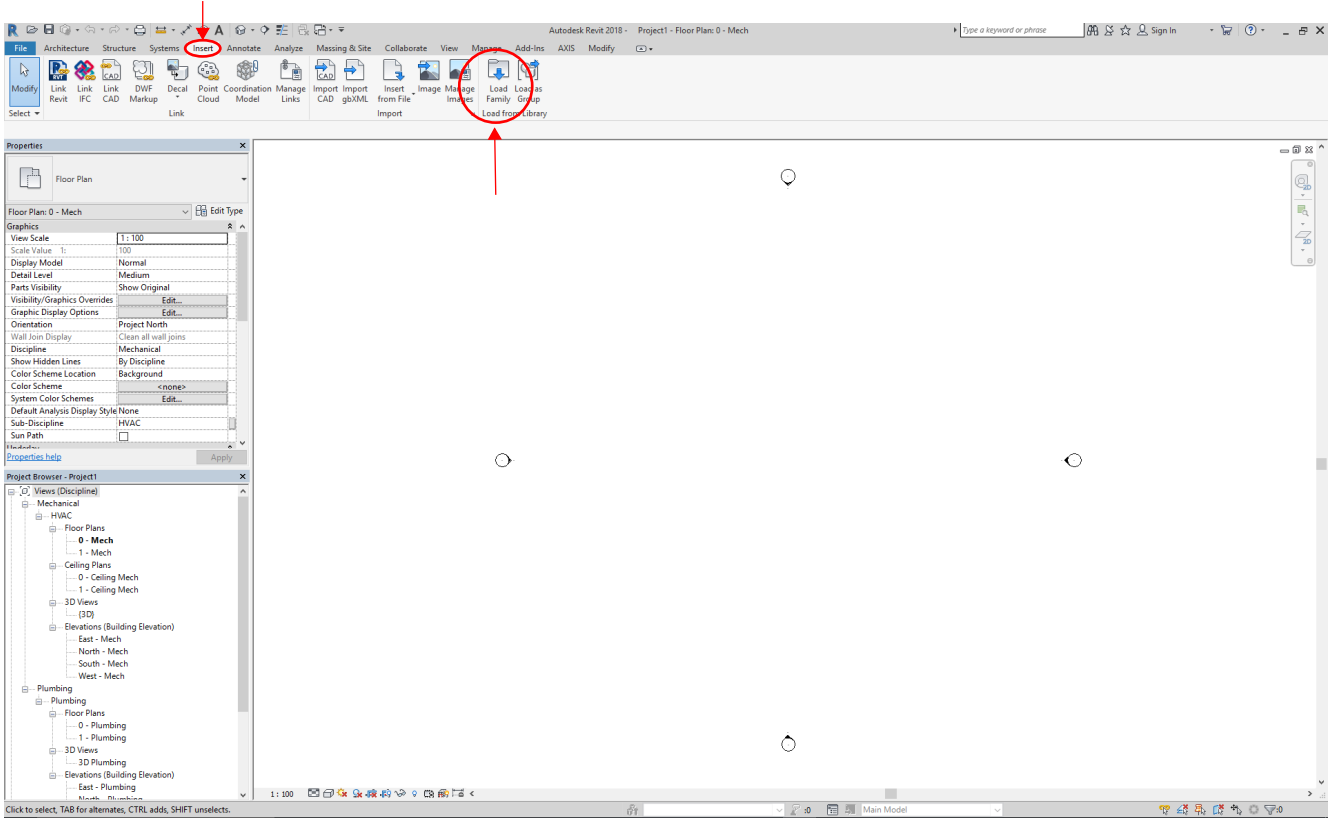
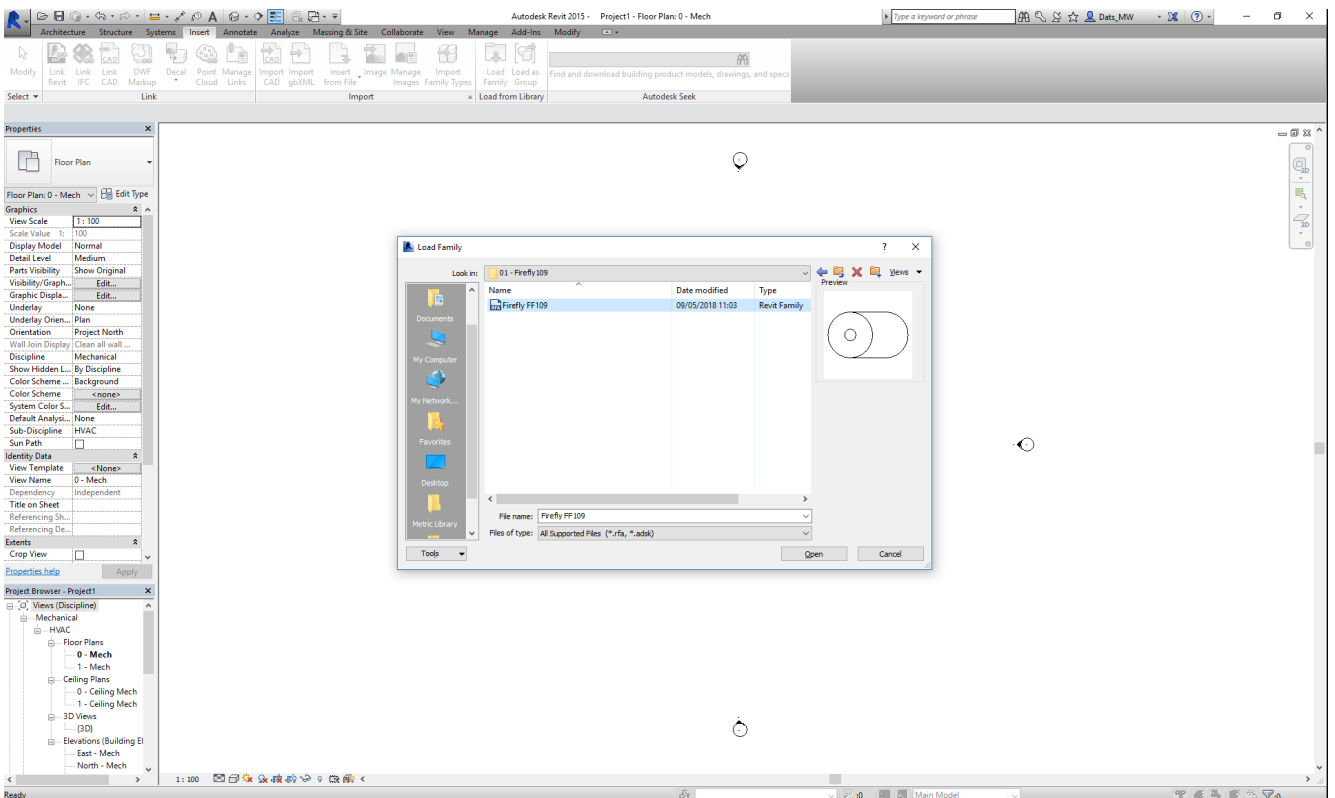


***Click the insert tab then the load family ribbon.***

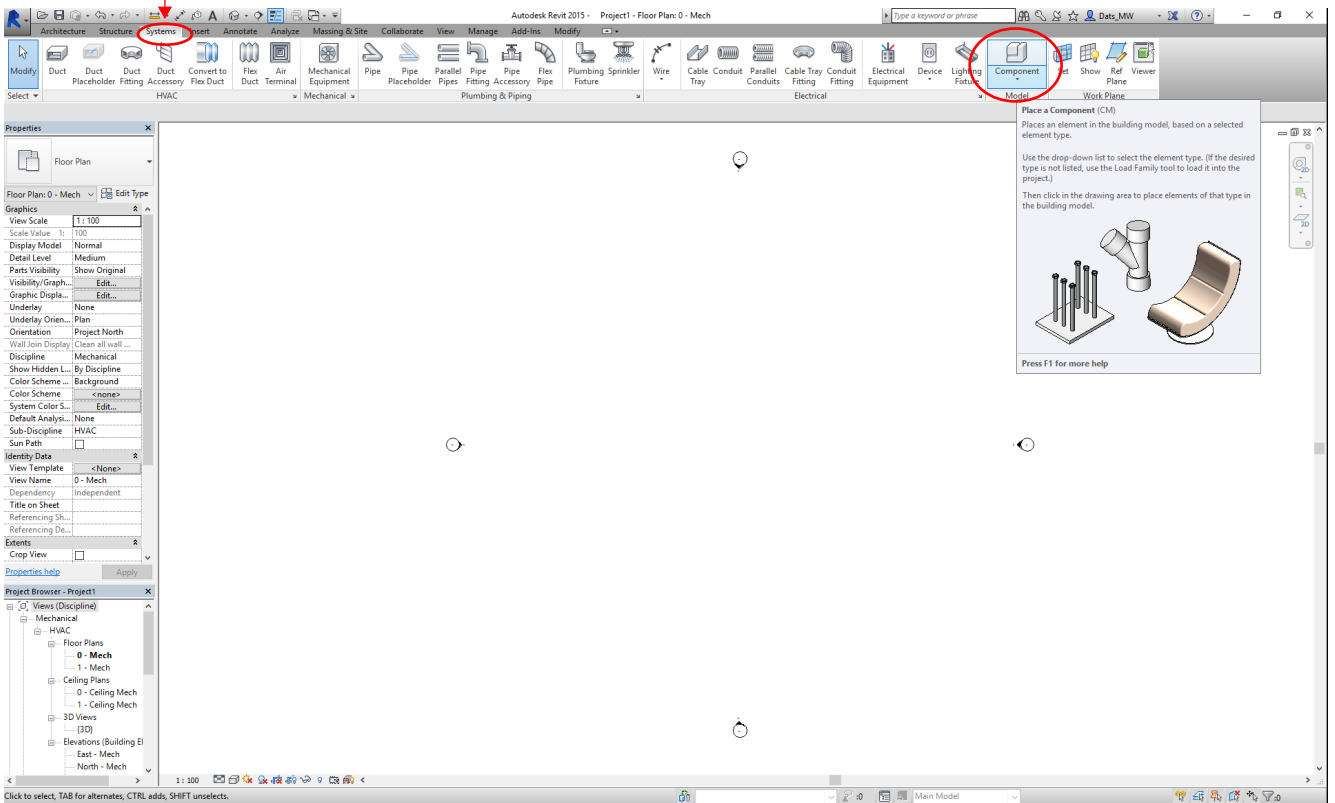


***Choose relevant family file***

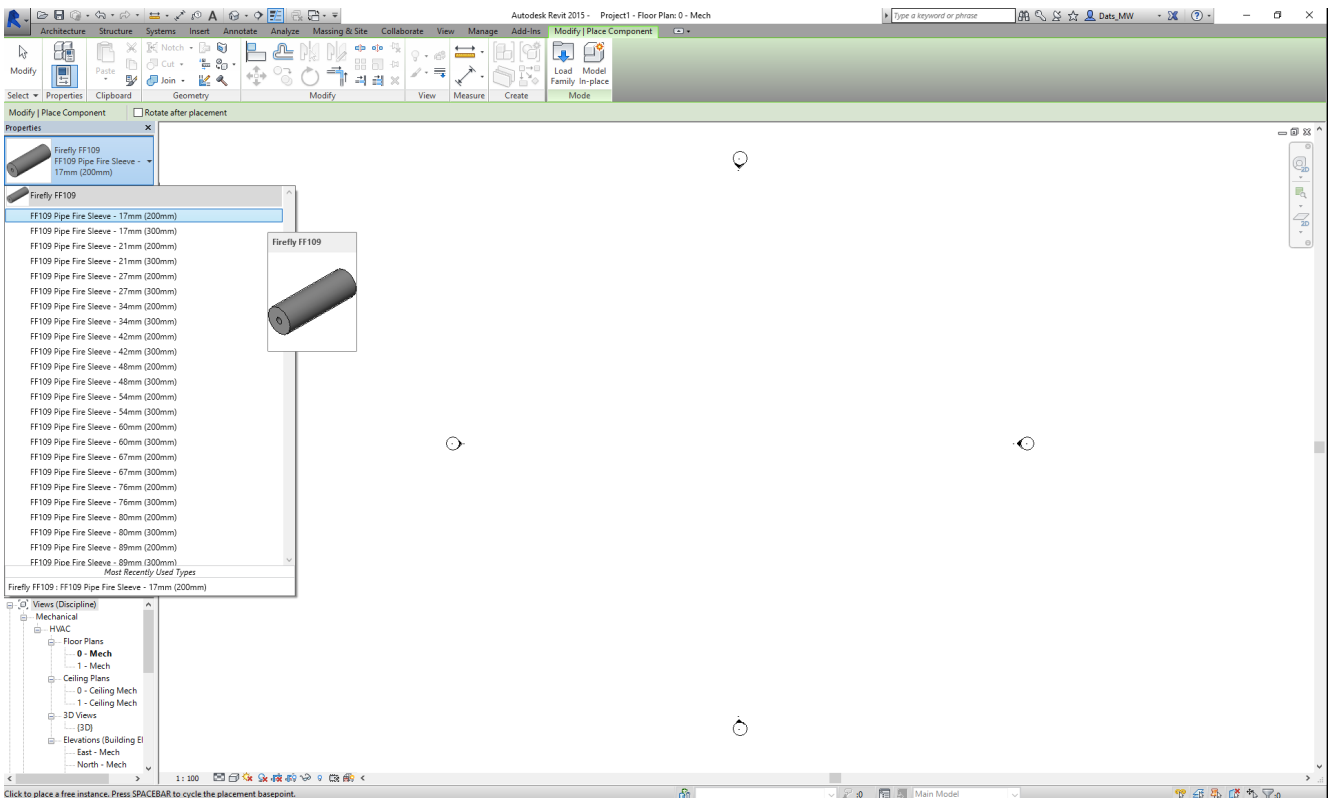


***The selected family is now loaded into Revit***

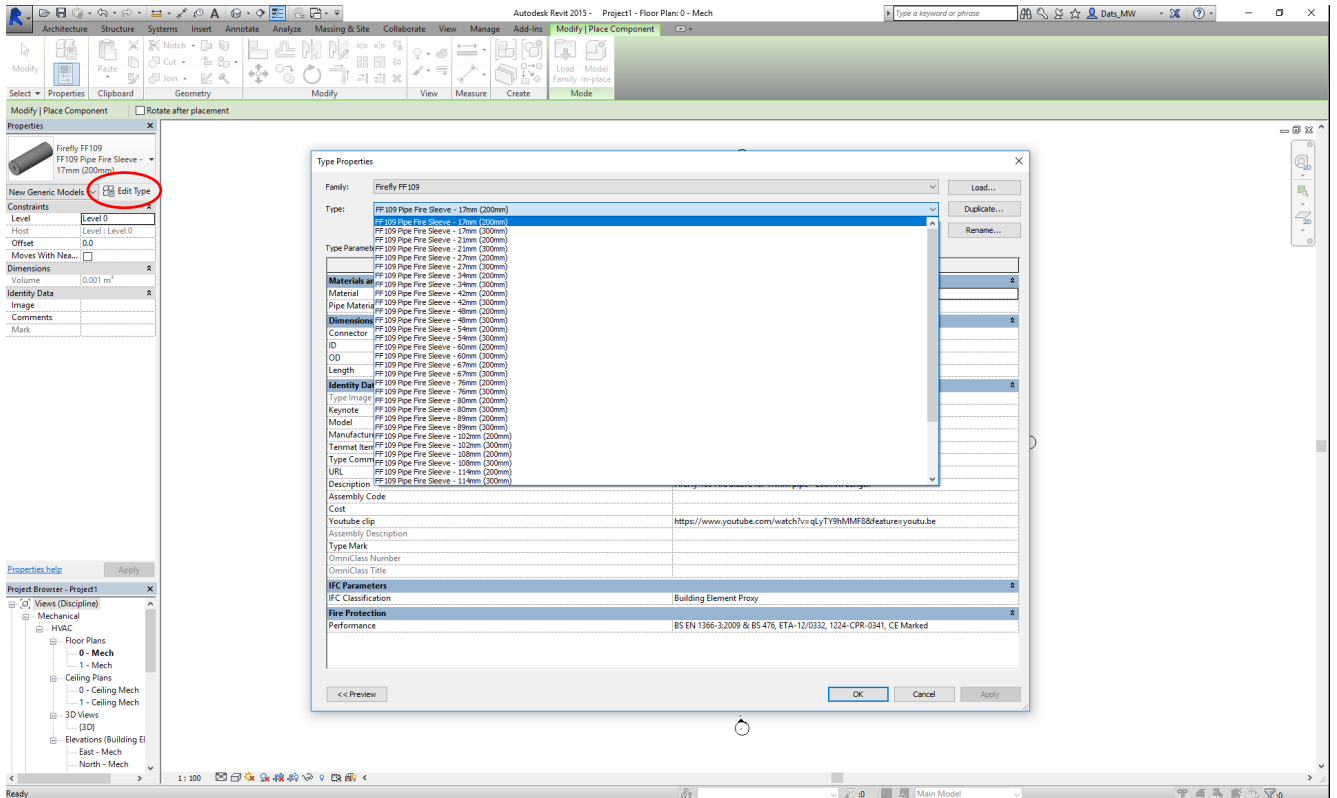
**Click the systems tab then the relevant category for the loaded family.**



**Click on the family in the properties bar to see all the options for that family.**



By clicking edit type you can also change the selected family or view additional parameters (options) for that family.



Place the family into your project and you're ready to go.

